

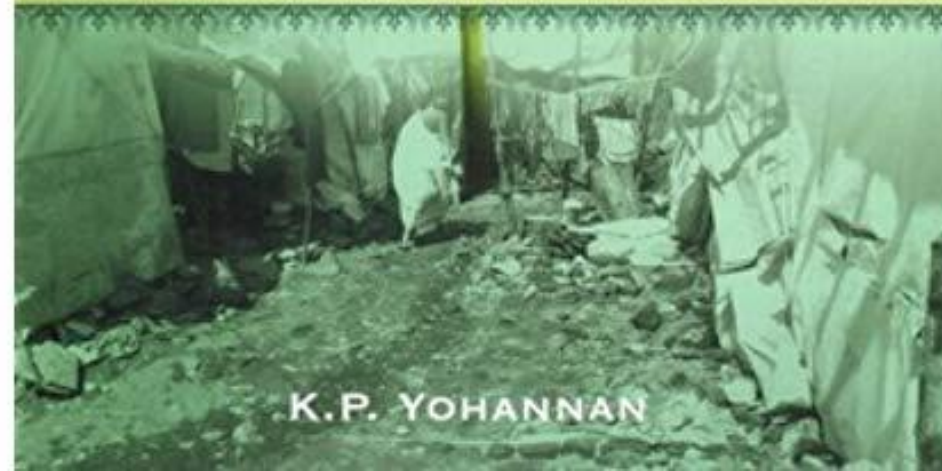


FOREWORD *by* FRANCIS CHAN



NO LONGER A SLUMDOG

BRINGING HOPE TO CHILDREN IN CRISIS



K.P. YOHANNAN













FARM HOUSE

	1-4	5-7	5-7	8-10	8-10
CHORES BOYS	G	B	G	B	
1 STUDY HALL	F	BAD	BAS	M	
2 MUSIC	SH	F	BAD	BAS	
3 BASKET BALL	M	SH	F	BAD	
4 BADMINTON	BAS	M	SH	F	
5	BAD	BAS	M	SH	

Music Guitar A) Notes

耶稣爱我我知道
 ye su ai wo wo zhi dao

Jesus loves me this I know
 因有圣经告诉我

For the bible tells me so
 凡属我主众小羊

Little ones to him belong
 but A D

They are weak He is strong
 wo sui ruan ruo zhu gang qiang
 我虽软弱 主刚强

D - - - G - - - D - - -

Do Re Mi Fa Sol
 1 2 3 4 5

D - G - (D-A-D-G)
 Yes, Jesus loves me

主耶稣爱我 (x3)
 Lord

Zhu ye su ai wo
 D A D
 For the bible tells me so

因有圣经告诉我
 yin you sheng jing gao su w

A - - -

Chord



G, A
 A, G
 G, A

















* TEAM: - 1 group

5

$$1) 5 + 3 = 8$$

$$2) 8 - 4 = 4$$

$$3) 4 \times 5 = 20$$

$$4) 20 \div 5 = 4$$













Pune City Post Office

Porwal Cycle & Motor Co

ABC Stationery Super Store

Kaka Halwai Sweets

Nashik Merchant Co-operative Bank
नाशिक मर्चंट बँक

MAHALAX ENTERPRI

Laxmi Road

Laxmi Road

Kedari Chowk

Tulshibaug Internal Rd

Saind Path

Budhwar Peth Rd

Shaniwar Peth Rd

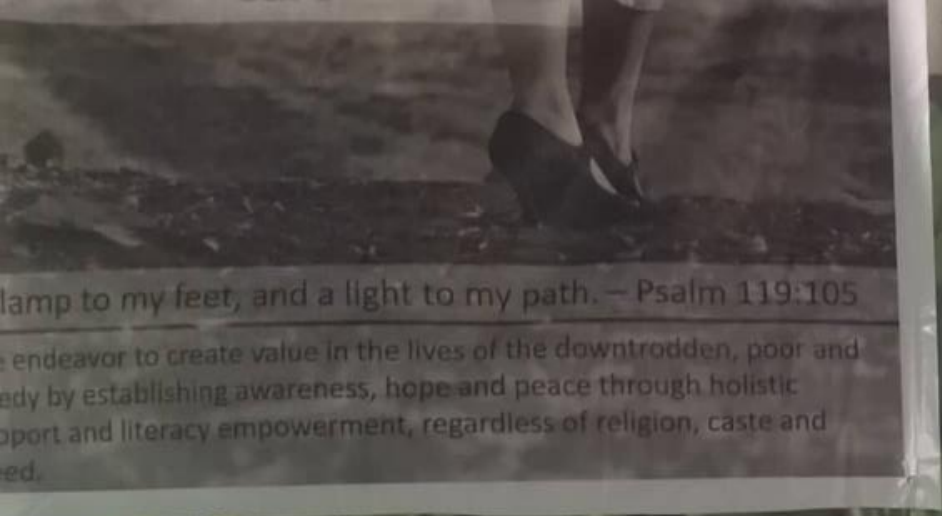
haug Internal Rd

Kedari Chowk Rd

Shaniwar Peth Rd

Rawal P





lamp to my feet, and a light to my path. — Psalm 119:105
endeavor to create value in the lives of the downtrodden, poor and
edy by establishing awareness, hope and peace through holistic
upport and literacy empowerment, regardless of religion, caste and
ed.









#KINGBEINGCHILDISH























युहन्ना ३:१६

“क्योंकि परमेश्वर ने जगत
से ऐसा प्रेम रखा कि
उसने अपना एकलौता
पुत्र दे दिया, ताकि जो कोई
उस पर विश्वास करे वह
नष्ट न हो, परन्तु अमृत
जीवन पाए।”

पवित्र बाइबिल







Reshma

The Baptism of Jesus



Shri Reshma, 12, 2023







Care

Psalm 119:105

I am not a wooden, poor and... through holistic... ion, caste and













Vision Evangelical Society's
Govt. Recognized
St. PETER'S ENGLISH HIGH SCHOOL
सेंट पीटर्स इंग्लिश हायस्कूल
संजय शिवाजी सायबानी, स्वीमार, लखड, पुणे-४११०६२







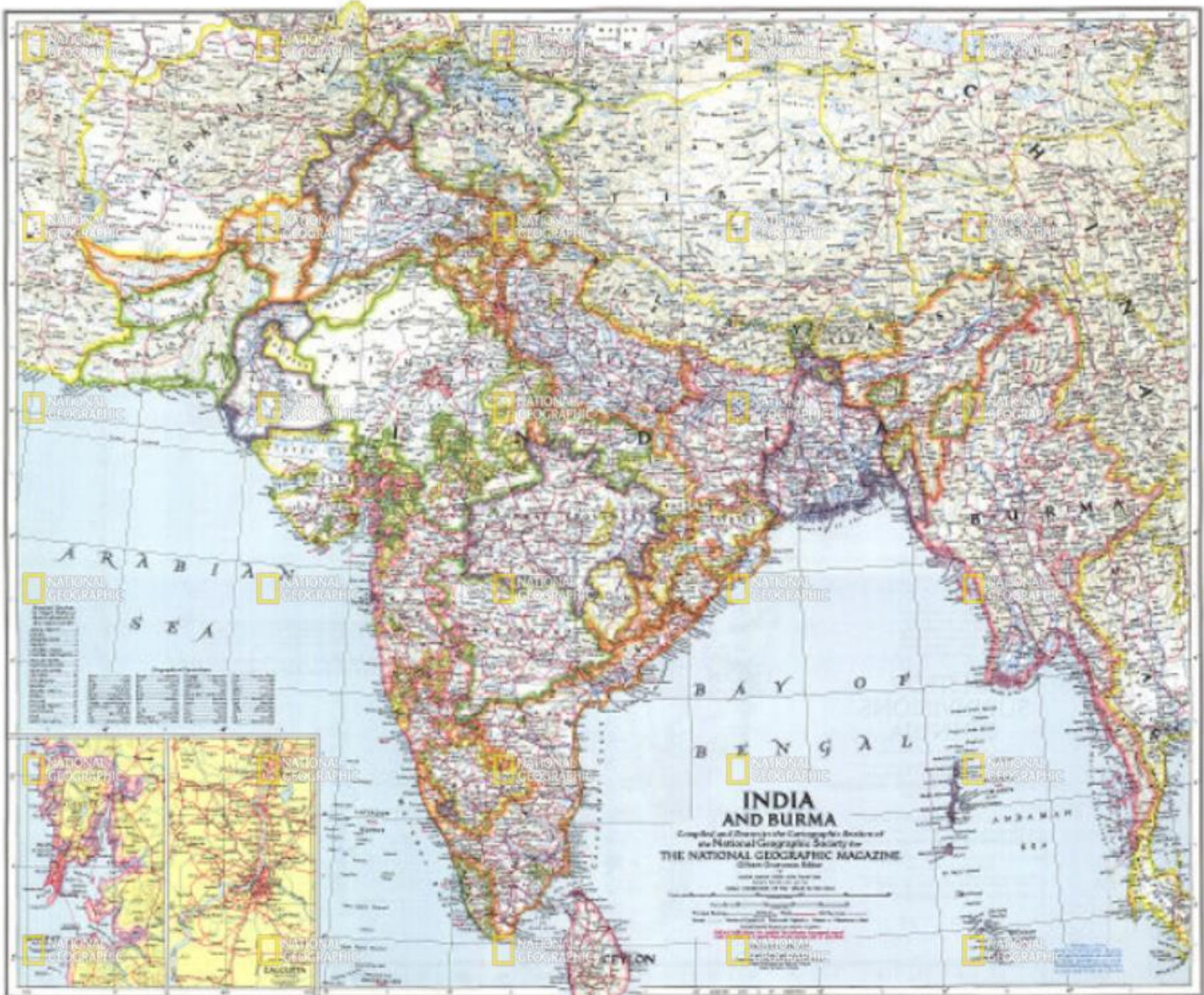












NATIONAL GEOGRAPHIC

NATIONAL GEOGRAPHIC

NATIONAL GEOGRAPHIC

NATIONAL GEOGRAPHIC

NATIONAL GEOGRAPHIC

NATIONAL GEOGRAPHIC

NATIONAL GEOGRAPHIC

NATIONAL GEOGRAPHIC

NATIONAL GEOGRAPHIC

NATIONAL GEOGRAPHIC

NATIONAL GEOGRAPHIC

NATIONAL GEOGRAPHIC

NATIONAL GEOGRAPHIC

NATIONAL GEOGRAPHIC

NATIONAL GEOGRAPHIC

NATIONAL GEOGRAPHIC

NATIONAL GEOGRAPHIC

NATIONAL GEOGRAPHIC

NATIONAL GEOGRAPHIC

NATIONAL GEOGRAPHIC

NATIONAL GEOGRAPHIC

NATIONAL GEOGRAPHIC

NATIONAL GEOGRAPHIC

NATIONAL GEOGRAPHIC

NATIONAL GEOGRAPHIC

NATIONAL GEOGRAPHIC

NATIONAL GEOGRAPHIC

NATIONAL GEOGRAPHIC

NATIONAL GEOGRAPHIC

NATIONAL GEOGRAPHIC

ARABIAN SEA

BAY OF BENGAL

INDIA AND BURMA

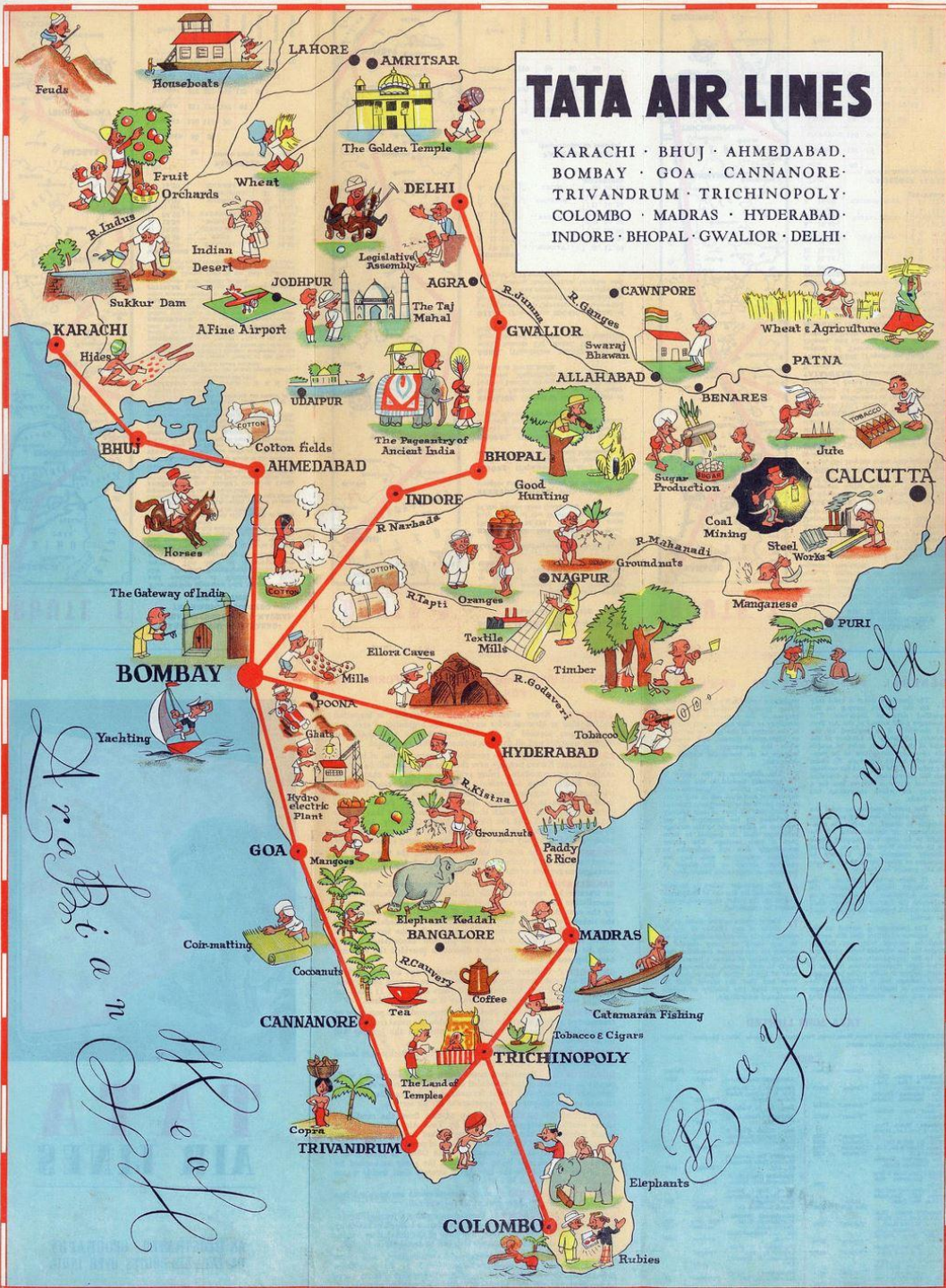
Compiled and Illustrated by the Cartographic Section of the National Geographic Society for THE NATIONAL GEOGRAPHIC MAGAZINE
Oliver Dymally, Editor

Scale: 1:1,000,000
Projection: Mercator
Source: Various sources, including the Survey of India, the Survey of Burma, and other official maps.



TATA AIR LINES

KARACHI · BHUJ · AHMEDABAD ·
 BOMBAY · GOA · CANNANORE ·
 TRIVANDRUM · TRICHINOPOLY ·
 COLOMBO · MADRAS · HYDERABAD ·
 INDORE · BHOPAL · GWALIOR · DELHI ·



	1-4	5-7	6-7	8-10	8-10
Girls Boys	G	B	G	B	B
1 STUDY HALL	F	BAD	BAS	M	
2 MUSIC	SH	F	BAD	BAS	
3 BASKET BALL	M	SH	F	BAD	
4 BADMINTON	BAS	M	SH	F	
5 FOOTBALL	BAD	BAS	M	SH	

Music Guitar A) Notes

Do Re Mi Fa So |
 1 2 3 4 5

耶稣爱我我知道
 ye su ai wo wo zhi dao

Jesus loves me this I know
 因有圣经告诉我

For the bible tells me so
 凡属我主众小羊

Little ones to him belong
 but they are weak

He is strong
 我虽软弱 刚强

Yes, Jesus loves me
 D - G - (D-A-D-G)

王耶稣爱我 (x3)
 Lord

Zhu ye su ai wo
 D A D

For the bible tells me so
 因有圣经告诉我

yin you sheng jing gao su wo,
 A - - -

Chord













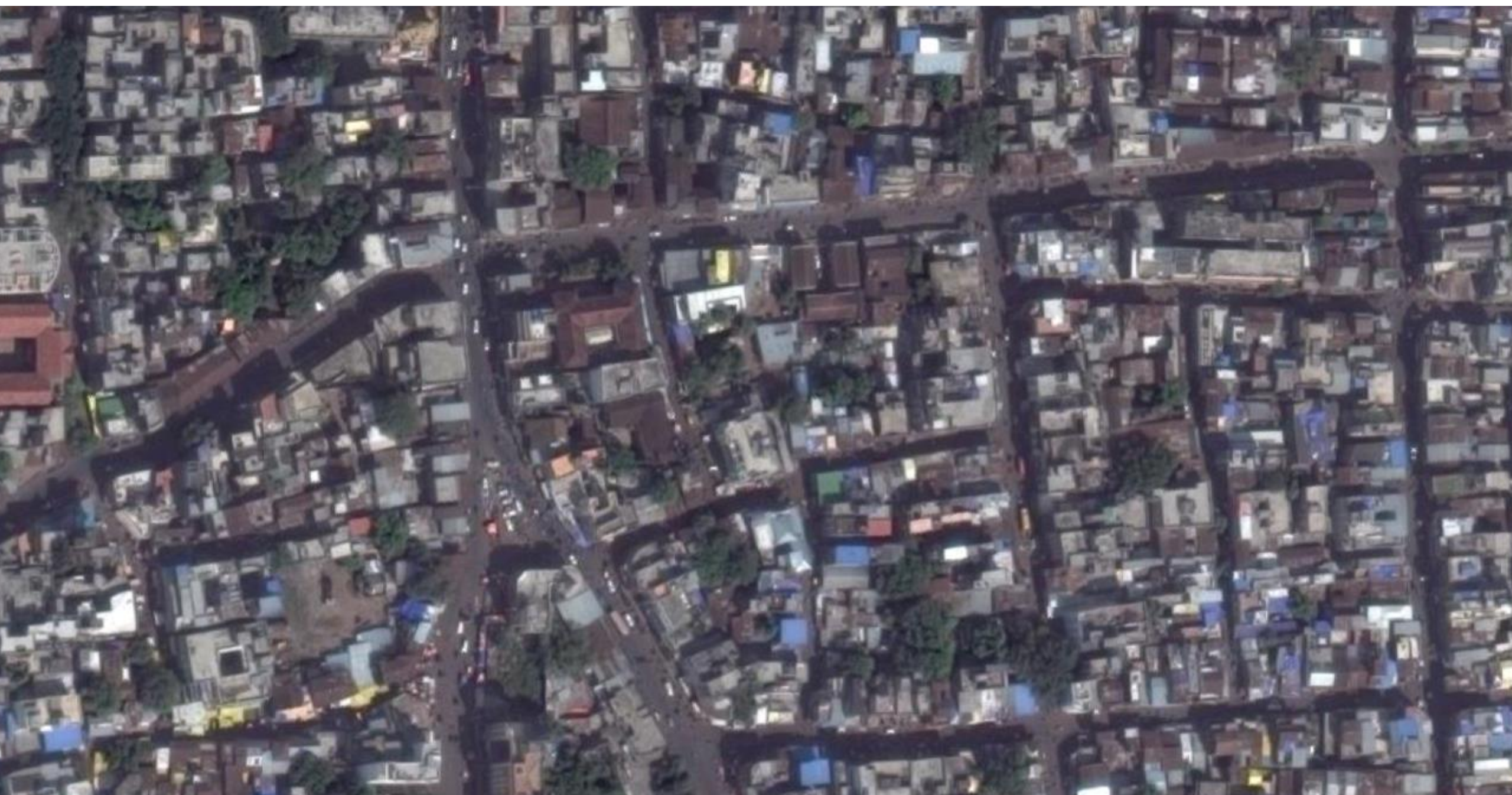


















से ऐसा प्रेम रख कि
उसने अपना एकलौता
पुत्र दे दिया ताकि जो कभी
उस पर किसी भी तरह का
घट न आए और वह
जीवन









































